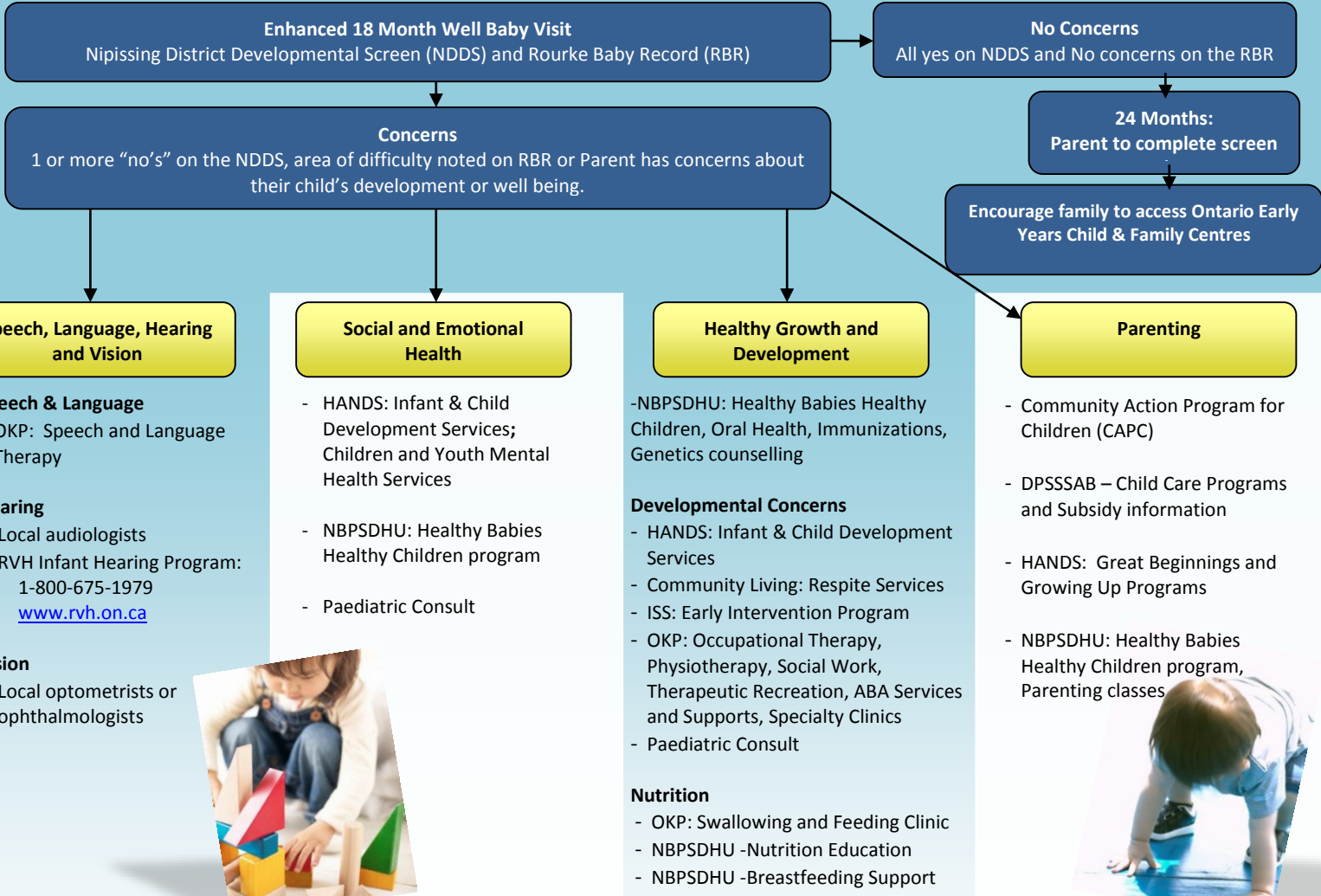


Enhanced 18-Month Well Baby Visit Parry Sound Resource Pathway

Billing Code:
Enhanced 18 month Well Baby Assessment:
GP/FP – A002 Paediatrics – A268
www.18monthvisit.ca



For All Families

Ontario Early Years Child & Family Centres

1-800-850-8855

Website: www.foreverychild.ca

Provides a safe, convenient and welcoming environment for children from birth to age 6 and parents to play, interact and learn together as well as receive support under the guidance of knowledgeable Early Years Educators and other professionals. All programs, activities and workshops are free. Caring and professional staff at each location assist parents and caregivers to find the answers they need by providing or linking them to the appropriate resources. We focus on addressing the cognitive, physical and emotional development of the children who attend and help parents achieve positive early learning experiences and promote the health and well-being of the child.

Parry Sound Community Services

*Note: There are sometimes wait lists for programs. Encourage parents to access Ontario Early Years Child & Family Centre’s for support while waiting.

Agency	Service Description
North East Community Care Access Centre 1-800-440-6762	The NECCAC coordinates nursing, personal support, physiotherapy, occupational therapy, dietetics, and speech language therapy for eligible infants and children. The NECCAC also assesses the eligibility of all school-aged children and infants for Enhanced Respite Funding. Website: ccac-ont.ca
Children’s Aid Society 1-877-303-0610	Child Protective Services: Help to ensure the best interests, protection and well-being of children. Infant & Child Development Services: A voluntary program that helps children up to 6 years of age, who have developmental delays or at risk for delays. Community Action Program for Children: This program is designed to assist young mothers between the ages of 13 and 21 who are either pregnant or have a child that is 6 years of age or younger. Website: parnipcas.org
Community Living PS 705-746-9330 AH 705-384-5384	Children’s Respite Services: help to arrange a period of rest and support to families who care for a child with physical and or developmental delays. Websites: clps.org ahcl.org
District of Parry Sound Social Services Administration Board www.psdssab.org	Children’s Services, Child Care Fee Subsidy Inclusion Support Services (ISS): An early intervention program for children aged 0-6 years with developmental/behavioral/at-risk issues. Children attending a licensed child care program are eligible for this service. Referrals are accepted from families, children’s programs, and any community agency within the District of Parry Sound. Resource Teachers provide ongoing screening resources and education to all persons involved with the child. Families are provided with the information and skills to choose program and services to meet their child’s needs. Resource Teachers will assist in the child’s transition to school and provide assistance in obtaining funding. Parry Sound: 1-800-461-4464; South River: 1-800-563-4201 Website: psdssab.org
HANDS: The Family Help Network 1-800-668-8555	Infant and Child Development Services: Provide home visiting, developmental assessments and service coordination to families of infants and young children (0-5 years) with developmental concerns. Autism Services: Autism Intervention Program and Autism Behaviour Communication Therapy Services. Children and Youth Mental Health: Counseling, School Mental Health, ISSP, Therapeutic Foster Home, Milieu and TIPS. Note: Involvement with one of these mental health services usually precedes psychological, psychiatric or residential services with the exception of established protocols. Great Beginnings Programs: Prenatal Nutrition Program provides prenatal and postnatal support; Growing Up Program provides education and support for parents of children 0-6 years. Supervised Access Program: Provides a safe, neutral & child focused setting for visits between a child and non-custodial or other family member. Website: thefamilyhelpnetwork.ca
North Bay Parry Sound District Health Unit 1-800-563-2808	Healthy Babies Healthy Children: Home visits by a Public Health Nurse and Family Home Visitor to support parenting, optimal child development and to link families to community services and resources. Open to pregnant women and families with children from birth to transition to school. Call for further information ext 2351. Immunizations: Available to all age groups. Call for an appointment ext 2252. Oral Health: Healthy Smiles Ontario is a government funded dental program that provides free preventive, routine and emergency dental services for children and youth 17 years and under from low income households. Dental services include check-ups, cleaning, fillings, tooth extraction, x-rays, scaling and urgent or emergency dental care. Call ext 2328 for more information or check out our website . Genetic Counselling Services: Comprehensive diagnostic, counselling & testing services to individuals & families with genetic concerns. For information call ext 2305. Parenting Classes: Aims to support parents by enhancing knowledge, skills and confidence to support behavioural, emotional and development concerns in children. Call for further information ext 2285. Nutrition/Breastfeeding: Information and support provided. Call ext 2351 for more information. Website: myhealthunit.ca
One Kids Place Children’s Treatment Centre 1-855-746-6287	Speech and Language Therapy: Assessment and treatment for children identified with speech, language or communication delays and disorders. Occupational Therapy: Assessment and treatment for children with fine motor delays, challenges with sensory and daily living skills. Therapeutic Recreation: Assists children/youth with physical, cognitive, emotional, communication and/or social limitations to acquire and/or maintain the skills, knowledge and behaviours that will allow them to enjoy their leisure optimally and function as independently as possible. Physiotherapy: Assessment and treatment for children with movement difficulties to help them achieve functional independence and mobility. Social Work: Provides information, education, support & counselling to assist children and their families to live more successfully with their special needs. Specialized Clinics: Augmentative/Alternative Communication, Seating & Mobility, Orthotics, Developmental. Feeding and Swallowing, Healthy Bodies Autism Services; The North East Regional Applied Behaviour Analysis (ABA) Program: assists children and youth diagnosed with Autism Spectrum Disorder to develop positive skills to address difficulties in communication, social interaction, daily living skills or emotional regulation that interfere with day-to-day living. Website: onekidsplace.ca